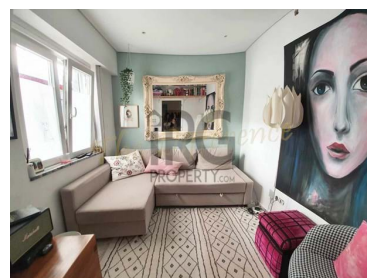




Loulé (São Clemente) - Semi-detached



3 Bedrooms
2 Bathrooms
80 Area (m²)

230 000 €
(EUR €)

Fantastic 3 Bed Townhouse in the Heart of Loulé

Charming 3 bedroom townhouse in the centre of Loule. Perfectly located, with everything you need just a short walk away. Enjoy the ease of having every just outside your front door, from local supermarkets, fresh fish, great restaurants and an array of bars and coffee shops to enjoy.

The property has a an entrance hall, Living room, fully equipped kitchen with pantry, a bathroom and a small lobby area, which can could even be converted into an indoor garden space.

Up a marble staircase to the first floor, you'll find a double, and single bedroom, with a classically finished bathroom with original tiles from 1969 in great condition!

There's also an attic space with a small hallway, an office, a double bedroom as well as a small

T +351 289 313 325 ¹ · T +44 800 015 9997 · E info@irgproperty.com

Estrada Quinta do Lago, Almancil, 8135-160
AMI 8687

¹ (Call to national fixed network) | ² (Call to national mobile network)



storage room, there's also potential to create a staircase to the rooftop, which offers stunning views of the Cathedral.

Great property in a wonderful town location, perfect for a real taste of Portuguese life in an easy setting!

Property Features

- Equipped kitchen
- Dishwashing machine
- Thermoaccumulator
- Built year: 1969
- Views: City view
- Main drainage
- Central location
- Energetic certification: F
- Renovation year: 2018
- Washing machine
- Refrigerator
- Proximity: Hospital, Pharmacy, Public Transport, Schools, Public Swimming Pools, Playground, Shopping, Airport, Mountain, Beach, Golf course, Restaurants, City
- Floors: 3
- Double glazing
- Internet connection available
- Mains water
- Solar orientation: South
- Furnished

T +351 289 313 325 ¹ · T +44 800 015 9997 · E info@irgproperty.com

Estrada Quinta do Lago, Almancil, 8135-160
AMI 8687

¹ (Call to national fixed network) | ² (Call to national mobile network)