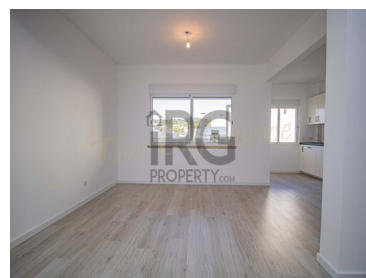




Loulé (São Clemente) - Apartment



2

Bedrooms



1

Bathrooms



100

Area (m²)

172 000 €

(EUR €)

Renovated t2 apartment very central in Loulé

This bright and sunny apartment is very centrally located in the heart of Loulé on a quiet street.

The apartments consist of a modern open plan kitchen/dining area with a covered balcony prepared as a utility area. There's one bathroom, two south-facing bedrooms, both of which have balconies and wardrobes.

The apartment has been completely renovated with new plumbing, electric, double glazing and electric shutters.

This apartment also benefits from having an allocated parking space in the underground garage.

T +351 289 313 325 ¹ · T +44 800 015 9997 · E info@irgproperty.com

Estrada Quinta do Lago, Almancil, 8135-160

AMI 8687

¹ (Call to national fixed network) | ² (Call to national mobile network)



Property Features

- Equipped kitchen
- Fitted wardrobes
- Proximity: Hospital, Pharmacy, Public Transport, Schools, Public Swimming Pools, Playground, Airport, Mountain, Restaurants, City
- Energetic certification: D
- Dishwashing machine
- Thermoaccumulator
- Built year: 1977

T +351 289 313 325 ¹ · T +44 800 015 9997 · E info@irgproperty.com

**Estrada Quinta do Lago, Almancil, 8135-160
AMI 8687**

¹ (Call to national fixed network) | ² (Call to national mobile network)